



Veterinary Digital Radiography System

SONTU100-Cupid B/G

TUTOM100E-32S

TUTOM200E-8S



Add: Building 1, Shenzhen Biomedicine Innovations Industrial Park, Pingshan New District, Shenzhen, 518122, China

Tel: +86 755 2790 5585

E-mail: global@sontu.com

Fax: +86 755 2790 9350

Web: www.sontu.com



Shenzhen SONTU Medical Imaging Equipment Co., Ltd

MISSION

Advancing the quality of care with constant innovations. Empowering the global medical system with high-quality imaging.

VISION

To be the leading brand in the industry.

VALUES

Dedicated for the satisfaction of our clients and employees.

ABOUT US

“TUTOM” is a veterinary brand built by SONTU, focusing on the innovation of animal imaging technology and advocating “concern for the radiation safety of veterinarians and pets”.

Founded in 2009 and headquartered in Shenzhen, Shenzhen ONTU Medical Imaging Equipment Co., Ltd. (“SONTU”) is a global manufacturer specializing in medical imaging equipment and a pioneer in independent development of digital X-ray detectors and digital X-ray imaging systems in China. By sticking to an innovation-driven development strategy, SONTU has achieved independent and controllable core technologies of digital X-ray image chain and system technologies. Today, it is one of the few manufacturers in the world that master mature technologies related to various core components of X-ray machines and system development. Many SONTU technologies are China’s first and at the forefront of the industry worldwide.

SONTU has a range of products covering general radiology, dental imaging, vehicle-mounted imaging, and veterinary imaging, with their design and manufacturing in strict compliance with ISO13485 Medical Device-Quality Management System Requirements for Regulatory. More than 20 products have been designated as national excellent medical equipment. SONTU has been a top three supplier of static digital radiography systems in China for many years, and its products have been well accepted in the international markets, including North America, South America, Africa, Asia and Europe.



Users across the globe



Intellectual property
right certificates



Countries /
Regions covered



R&D Centers

SONTU100-Cupid-B/G



Large LCD Touchscreen
15-inch LCD touchscreen with an easy-to-use interface for smooth operation.

Four-direction Floating Table
The table is unlocked and controlled via the foot pedal, enabling flexible operations and convenient radiographic positioning.

Multiple Restraining Buckles for Effective Shooting
Multiple buckles are available on both sides of the diagnostic table, allowing the pets to be restrained for more effective imaging.

The dual-function foot pedal facilitates exposure and table movements in four directions.

Internationally Renowned Superior Quality X-ray Tube
Canon X-ray tube with extremely low noise, high heat capacity and stable performance.

Visual Exposure and Dynamic Monitoring of Positioning Status (Optional)
High-definition cameras are equipped for visualized operations in two separate rooms and dynamic monitoring of the position and status of the pet.

Self-developed Flat Panel Detector
IP54 rating for protection against dust and water sprays, easy to clean and disinfect.

Built-in Design of Energy-storage High Voltage Generator
Supports single-phase input voltage, and saves floor space.

TUTOM100E-32S

Large-size Flat Panel Detector
Self-developed 17 x 17 inch flat panel detector, covering a wider shooting range for superior imaging.

Built-in Design of Energy-storage High Voltage Generator
Supports single-phase input voltage, and saves floor space.

Split Design of Rack and Table; Space Saving and Easy to Install
Adopts split design of rack and table, facilitating easy movements and saving space.

Exposure Control Foot Switch (standard)

Integrated Console (Standard)
The easy-to-use console can realize startup, shutdown and manual exposure.

TUTOM200E-8S

8 kW High-power Integrated Portable Generator
Supports single-phase input voltage, the easy to install and disassemble high voltage generator integrates with X-ray tube and collimator, enabling modular integrated operations.

LCD Touchscreen
7-inch LCD touchscreen with an easy-to-use interface, clear display and smooth operations.

Split Design of Rack and Table; Space Saving and Easy to Install
Adopts split design of rack and table, facilitating easy movements and saving space.

Large-size Flat Panel Detector
Self-developed 17 x 17 inch flat panel detector, covering a wider shooting range for superior imaging.

Exposure Control Foot Switch (optional)

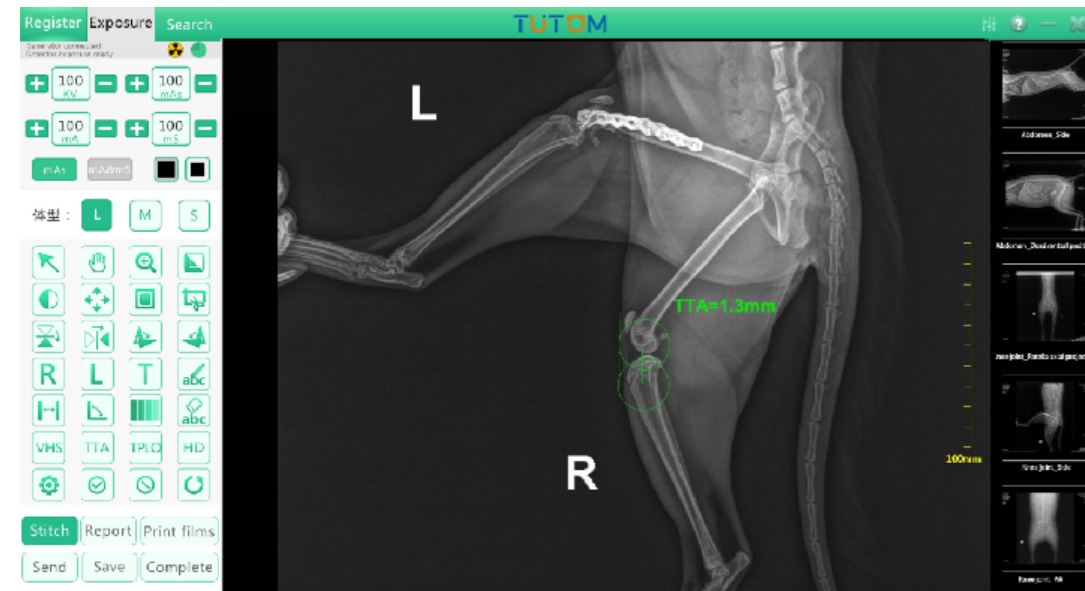


The TUTOM veterinary digital radiography (DR) device is a product that caters to the clinical application needs of veterinarians and integrates multiple patented technologies. With its novel shape, adorable appearance, excellent image chain configuration and minimal operation process design, this product can provide you with high-quality images and an efficient and intelligent operation experience.

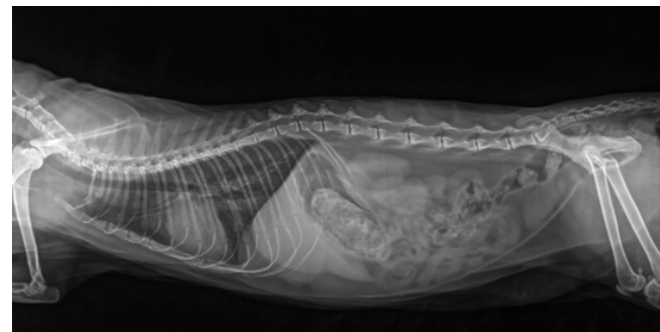
- **Self-developed Flat Panel Detector**
High spatial resolution, excellent images, and lower dosage, protecting health.
- **Universal Moving Caster**
Equipped with universal wheels at the bottom of the table, enabling its easy movement of the table.

- **Preset Shooting Parameters for a Variety of Animals**
Preset program function specially designed for common animals (cats, dogs, etc.) and a variety of exotic pets (birds, fish, tortoises, snakes, etc.), providing shooting parameters according to the physical characteristics of different animals and recommending the best exposure dose.

Superior Image Acquisition and Processing System



TUTOM Veterinary Workstation is an image acquisition and processing system designed and developed by SONTU. With animal body characteristics and structural differences considered, it ensures the best image acquisition at the lowest exposure dose and has obtained the computer software copyright from the NCAC. Easy-to-use interface, smooth and intelligent operation process, support emergency quick exposure and DICOM image export and data retrieval.



Advanced Clinical Application Functions

Panoramic stitching

Panoramic stitching technology breaks through the limitation of the panel size, and allows for stitching of multiple images with one click, meeting the needs of full-length radiographic.

VHS – vertebral heart size measurement function

The VHS measurement function, by measuring the animal's heart and thus monitoring the range of heart enlargement/decrease, provides specific data for veterinarians to determine the size of the heart and aids in the diagnosis of common heart diseases such as dilated heart disease, mitral valve endocarditis and heart failure.

TTA – tibial trochanteric advancement measurement function

The TTA measurement function provides data reference for the treatment of anterior cruciate ligament (ACL) rupture in the knee joint of animals by measuring the size between the femur and tibia.

TPLO – tibial plateau leveling osteotomy measurement function

The TPLO measurement function is used to measure the tibial plateau angle or tibial obliquity in animals, providing data reference for the treatment of knee related conditions due to ACL rupture.

HD – hip dysplasia measurement function

The HD measurement function is used to measure and analyze the position of the hip joint in relation to the femoral head in animals for assessing the severity of inflammation and joint laxity.

Technical Specifications

X-ray Generator

Power source condition	Single phase	Single phase
Output power	32kW	8kW
Tube voltage	40~125kV	40 ~125kV
Tube current	10mA~400mA	3.2mA ~160mA
Loading time	1~6300ms	1~1000ms
Current time product	0.1~80mAs	0.1~250mAs
Nominal output power	32kW(100kV,320mA,0.1s)	8kW(100kV,80mA,0.1s)

X-ray Tube

Maximum X-ray Tube Voltage	125kV	125kV
Nominal focal spot value	Small Focus 1.0mm /Large Focus 2.0mm	2.0mm
Rotation speed	2700rpm@50Hz/3200rpm@60Hz	//
Target anode angle	16°	15°
Anode Heat Content	100 kJ (140 kHU)	30kJ

Flat Panel Detector

Scintillator	Csl	Csl
Image Sensor	a-Si(Amorphous Silicon) TFT	a-Si(Amorphous Silicon) TFT
Active area size	14"x17"	17"x17"
Active area pixel	2496x3040	3072x3072
Pixel size	140 μm	140 μm
Spatial resolution	3.4 Lp/mm	3.4 Lp/mm
A/D Conversion	16bits	16bits
Dimensions(Length*Width*Thickness)	462*384*16mm	462*462*16mm
Imaging time	5s	5s
Ingress protection	IP54	IPX4

Table and Tabletop

SID	1000mm	1050mm ± 5%
Tabletop dimensions	1200*650mm	1200*650mm
Maximum height	760mm	730mm
Table movement range	Longitudinal travel ±50mm Transversal travel ±110mm	Free movement with universal caster
Weight Capacity	80kg	60kg